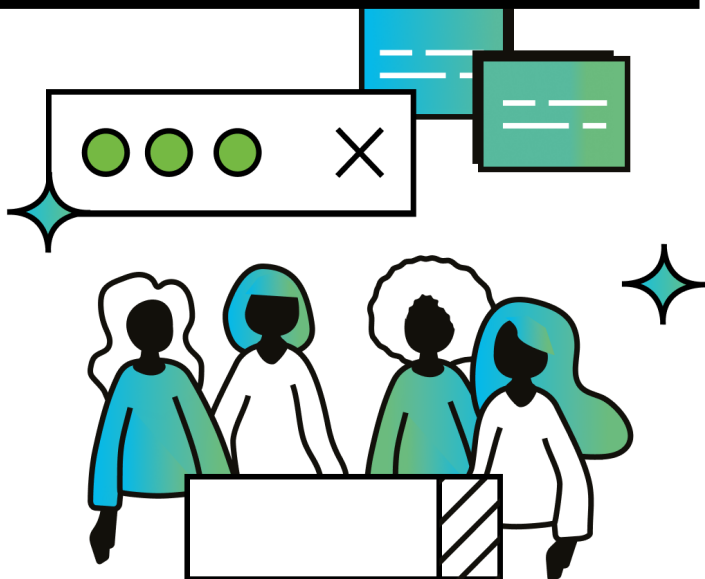


# Dialog- Rundfahrt

Creatively recombining existing  
knowledge in a World Café.



**Duration**

2-3 Hours

**Participants**

12-X

**Effort**



## Material

- Room with 4-5 tables
- Flipcharts
- Pens
- Timer

## Roles

- Organiser of the World Café
- Conversation-Participants
- Hosts (optional)

## Learn more:



## Why a World Café?

Experience shows that the best discussions and most creative ideas emerge during meetings between the lines – namely during the break. A World Café replicates this atmosphere to facilitate a productive exchange between a wide range of participants, using specific questions as orientation. The method enables the rapid development of a whole range of ideas by recombining existing knowledge. The method can be adapted in many ways and also works remotely.

## That's what's important:

The success of a World Café depends on how well it is organised. While logistics and good time management are of great importance, the choice of appropriate questions is even more crucial: they should be open-ended enough to allow for creative responses, whilst also providing participants with a structure for the discussion. It should be noted that World Cafés are primarily suited to brainstorming a variety of approaches and are not the appropriate setting for developing detailed solutions – the results compiled afterwards are better suited to this purpose.

